



SUPERBOWL LVIII

(11-6)
9-7-1 ATS

(12-5)
9-8 ATS

KANSAS CITY

SAN FRANCISCO

PASS/RUSH RANKS

	KC (O)	SF (D)	SF (O)	KC (D)
PASSING				
PASS EFFICIENCY	12	6	1	3
EXPLOSIVE PASS%	21	4	1	1
RUSHING				
RUSH EFFICIENCY	18	26	1	28
EXPLOSIVE RUSH%	25	17	2	13
OL/DL ADJ LINE YDS (FBO)	20	10	2	25

QB V PRESSURE RANKS

	PATRICK MAHOMES	BROCK PURDY
BLITZ		
PFF GRADE V BLITZ	10	3
OPP BLITZ RATE	30	7
PRESSURE		
PFF GRADE V PRESSURE	5	9
OL PRESSURE	24	14
OPP DL PRESSURE	18	2

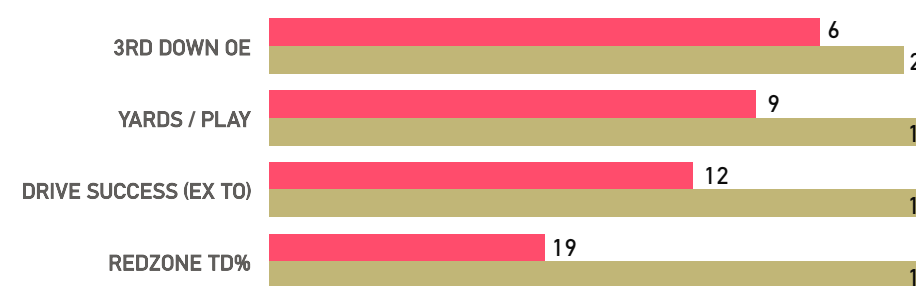
TEAM RANKS

	KC	SF
NET SUCCESS	5	1
NEUTRAL PASS%	1	22
OFFENSE PACE	11	30
TO MARGIN	25	7
OFF TO EPA	23	13
DEF TO EPA	27	7

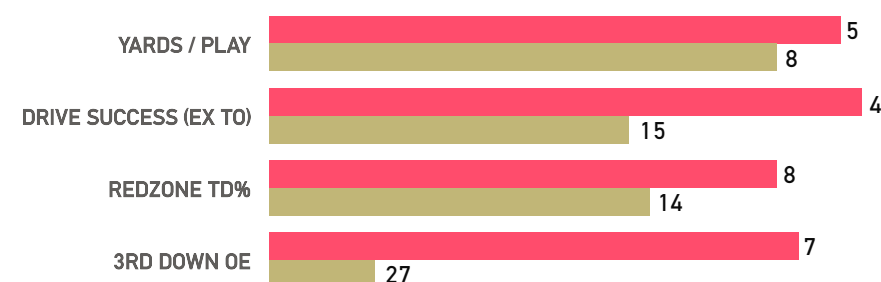
GAME NOTES

- Since Safety Talanoa Hufanga got hurt (starting week 12), the SF defense ranks 23rd in EPA per play (excluding week 18) and 20th on drop backs, after ranking 5th best in EPA the first 11 weeks. Four of their last five opponents have generated a positive EPA after allowing only four of their first 14 opponents to generate a positive EPA.
- Mahomes is currently 5th in EPA per drop back and Purdy #1 in the NFL. SF has faced seven QBs ranked in the top 10 in EPA this season (Goff, Love, Baker, Cousins, Dak, Stafford and Lamar), allowing a +0.029 EPA/DB and 22 ppg. That EPA ranks 4th best among all teams vs top 10 QBs. SF went 5-2 straight up but just 1-5-1 ATS in those games. KC ranked 11th in EPA vs six top 10 QBs, going 3-3 SU and ATS.
- Both KC (3rd) and SF (5th) rank in the top 5 in pass defense. Purdy has faced the 10th easiest schedule of opposing pass defenses by EPA and went 0-2 SU and ATS against the two top 5 pass defenses he faced this season (CLE and BAL). Those were the only two games all season that he produced a negative EPA (-0.441, -0.223) and sub 40% success rate (33%, 39%) all season.
- Mahomes faced two top 5 pass defenses in the Jets and Ravens. He generated a +0.190 and +0.197 EPA in those games, the highest EPA the Ravens allowed to any QB all season and the 4th highest the Jets allowed all year.
- In three career SBs, Mahomes has produced a +0.114 EPA and 26 PPG. Last year vs the Eagles was the single best EPA in a Super Bowl by any QB, as far as my data goes back (2010).
- Mahomes torched the Niners defense last year for 423 yards and 3 TDs en route to a 44-23 blowout win in SF. His +0.701 EPA was the single highest EPA game allowed by the Niners in the last three seasons.
- SF uses 2-1 personnel (2 RBs, 1 TE) at the 2nd highest rate in the NFL, at nearly 40% of snaps. KC ranks 4th best against 2-1 defending the pass but is 31st defending the run. Overall, KC ranks 25th in ypc allowed on the ground against the 11th easiest schedule of opposing run offenses. Vs six RBs who rank top 10 in ypc, they've allowed 5.3 ypc. CMC ranks #1 in the NFL in ypc at 5.4.
- Brandon Aiyuk is 9th in rec yards per game at WR. KC is #5 in DVOA defending #1 WRs and have allowed just 49.4 yards per game, 2nd lowest in the NFL. They have played 8 games vs the top 12 WRs in yards per game and held all 8 to a yardage total below their season average. Those WRs gained just 368 yards vs their aggregate season average of 764.3 yards. Every single WR was held to a yardage total that was at least 25% below their season figure vs KC.

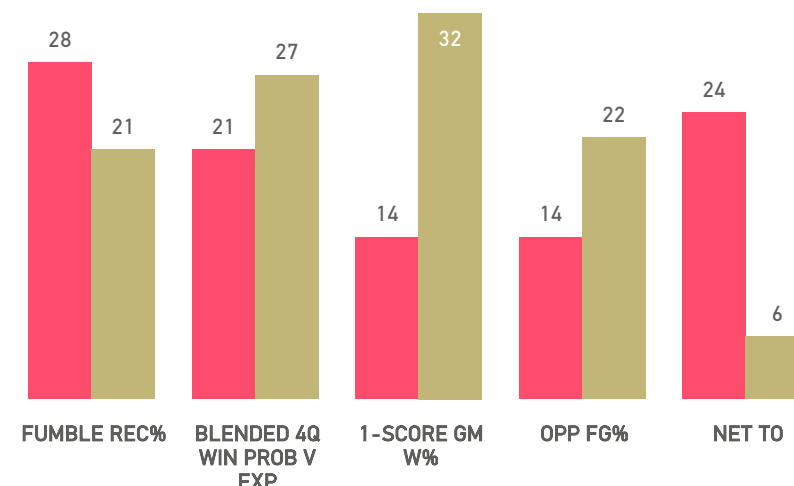
OFFENSIVE ADV METRIC RANKS



DEFENSIVE ADV METRIC RANKS



TEAM LUCK RANKINGS



SUPER BOWL TRENDS

- Super Bowl favorites have gone just 8-15 ats (35%) in the last 23 Super Bowls
- The over has hit in 10 of 17 Super Bowls with a total under 50 points since 1990
- This is the first Super Bowl since 2015, with an over/under of less than 48 points. 8 of the 12 Super Bowls since 2000 with a total of 48 or less have gone over the total, by an average of 5.8 ppg.
- The first quarter has been the highest scoring quarter in only one of the last 26 Super Bowls
- There have been 12 first time SB QBs like Brock Purdy who is facing a QB who is not making his first time SB start like Patrick Mahomes. 1st time SB QBs vs veteran SB QBs are 8-4 ATS since 2000 and 8-2 ATS when favored. 1st time team SB QB team totals are 9-3 to the over
- Teams like SF, who won both Playoff games without covering prior to their SB appearance, are 1-5 SU and ATS since 2000, losing by an average of 4.5 ppg and a -13 ATS margin. The lone SB ATS and SU winner being the 09 Saints over the Colts.

(KC) STARTING LINEUP

OFFENSE	DEFENSE
TE TRAVIS KELCE	WLB WILLIE GAY
SWR RASHEE RICE	SS JUSTIN REID
RWR MARQUEZ VALDES-SCANTLING	SLB DRUE TRANQUILL
RT JAWAAN TAYLOR	RDT TERSHAWN WHARTON
RG TREY SMITH	RDE MIKE DANNA
RB ISIAH PACHECO	RCB JAYLEN WATSON
QB PATRICK MAHOMES	NB TRENT MCDUFFIE
LWR JUSTIN WATSON	MLB NICK BOLTON
LT DONOVAN SMITH	LDT CHRIS JONES
LG JOE THUNEY	LDE GEORGE KARLAFTIS
C CREED HUMPHREY	LCB L'JARIUS SNEED
	FS MIKE EDWARDS

(SF) STARTING LINEUP

OFFENSE	DEFENSE
TE GEORGE KITTLE	WLB DRE GREENLAW
SWR JAUAN JENNINGS	SS JI'AYIR BROWN
RWR DEEBO SAMUEL	RDT JAVON HARGRAVE
RT COLTON MCKIVITZ	RDE CHASE YOUNG
RG SPENCER BURFORD	RCB AMBRY THOMAS
RB CHRISTIAN MCCAFFREY	NB DEOMMODORE LENOIR
QB BROCK PURDY	MLB FRED WARNER
LWR BRANDON AIYUK	LDT ARIK ARMSTEAD
LT TRENT WILLIAMS	LDE NICK BOSA
LG AARON BANKS	LCB CHARVARIUS WARD
FB KYLE JUSZCZYK	FS TASHAUN GIPSON SR.
C JAKE BRENDEL	

(KC) SCHEDULE

1 v	20-21
2 @	17-9
3 v	41-10
4 @	23-20
5 @	27-20
6 v	19-8
7 v	31-17
8 @	9-24
9 v	21-14
11 v	17-21
12 @	31-17
13 @	19-27
14 v	17-20
15 @	27-17
16 v	14-20
17 v	25-17
18 @	13-12

(SF) SCHEDULE

1 @	30-17
2 @	30-23
3 v	30-12
4 v	35-16
5 v	42-10
6 @	17-19
7 @	17-22
8 v	17-31
10 @	34-3
11 v	27-14
12 @	31-13
13 @	42-19
14 v	28-16
15 @	45-29
16 v	19-33
17 @	27-10
18 v	20-21